

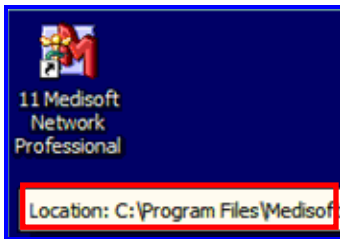
## Medisoft 11.18 EDI Install

**Date Posted 1/16/08.**

The download link within this article contains **All Medisoft 11 Modules** built for this release.

Follow the directions below to download and install:

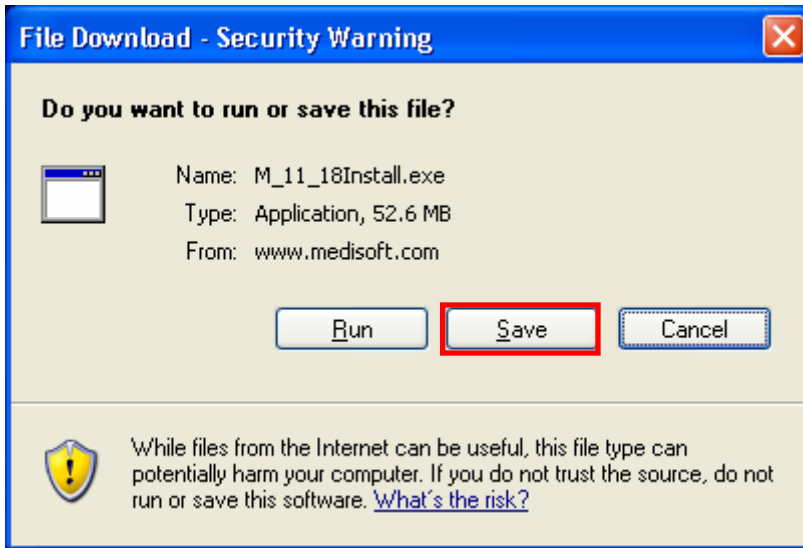
1. Find the directory to which you installed Medisoft 11 by holding your pointer over the **Medisoft Desktop** icon. A pop-up will appear with the location of the Medisoft 11 Program Directory. By default, the location is **C:\Program Files\Medisoft\Bin**. **NOTE: If your location is other than this, write it down as it will be crucial in step ten.**



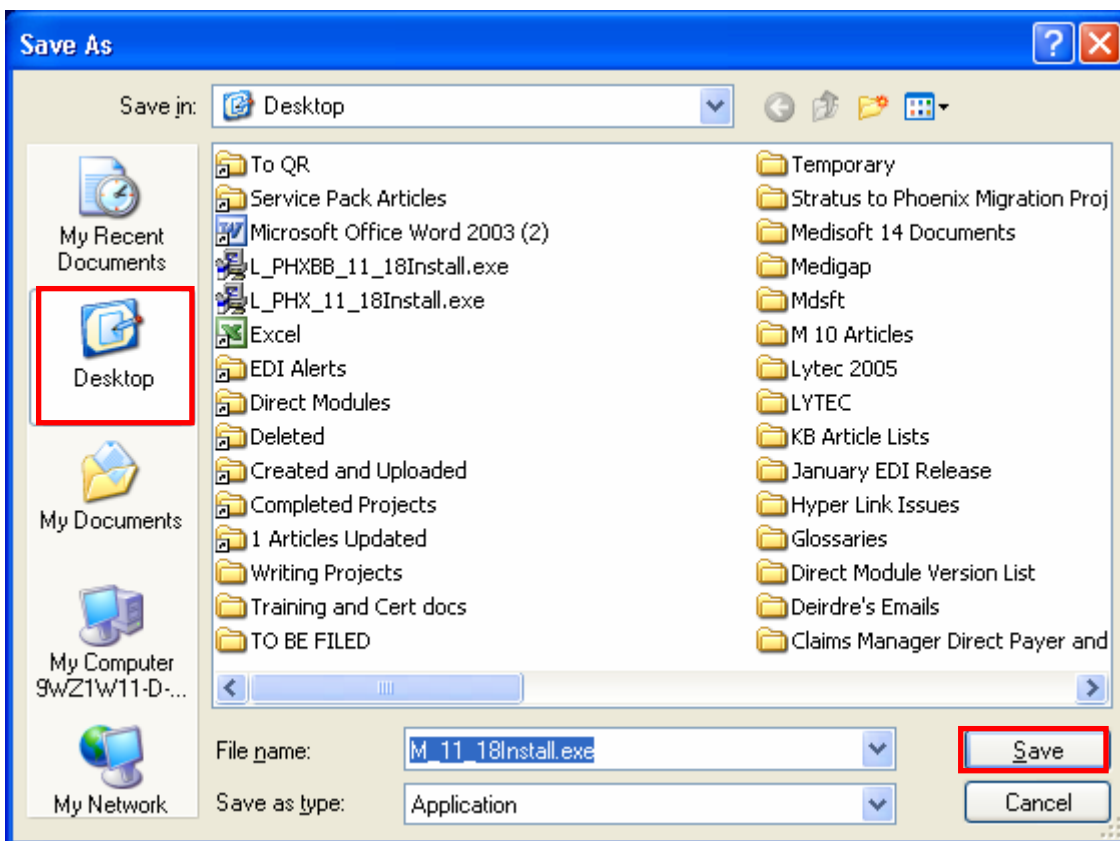
2. Click on the following link to download the **Medisoft 11.18 install**:

[www.medisoft.com/download/edi/M\\_11\\_18Install.exe](http://www.medisoft.com/download/edi/M_11_18Install.exe)

3. When the **Security Warning** opens, click **Save**.

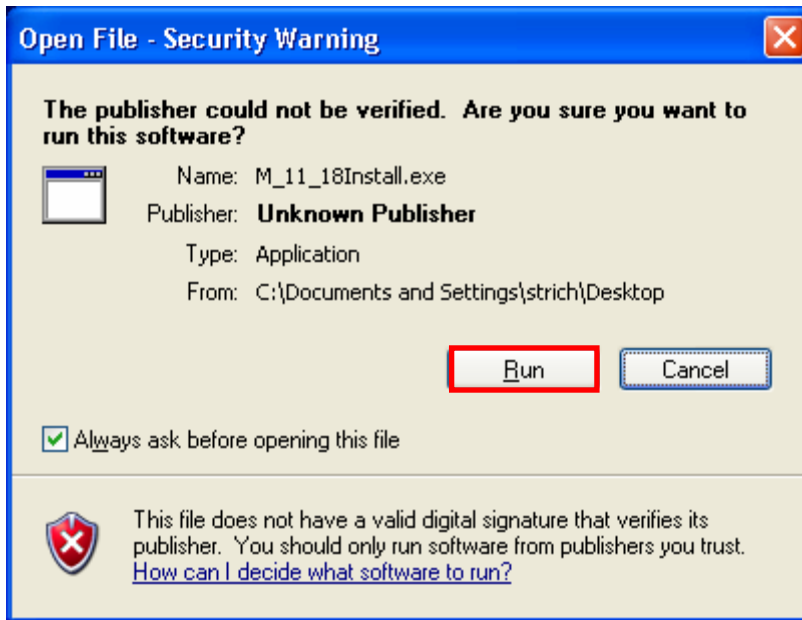


4. Select **Desktop** and click **Save**.

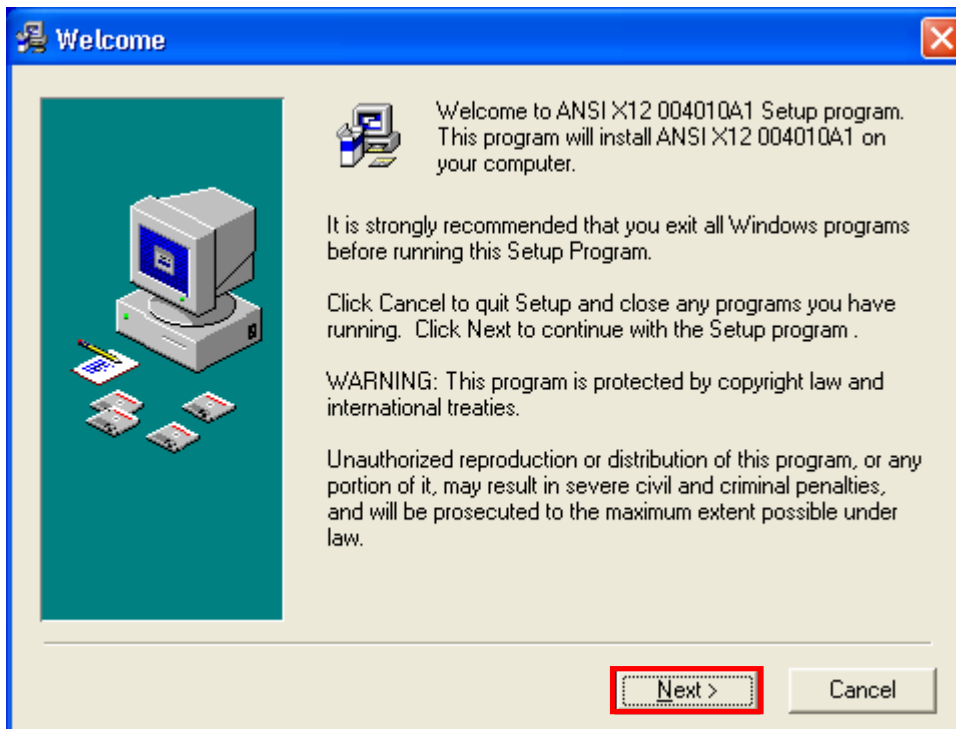


5. Once the download completes, double-click on the **M\_11\_18Install.exe** icon.

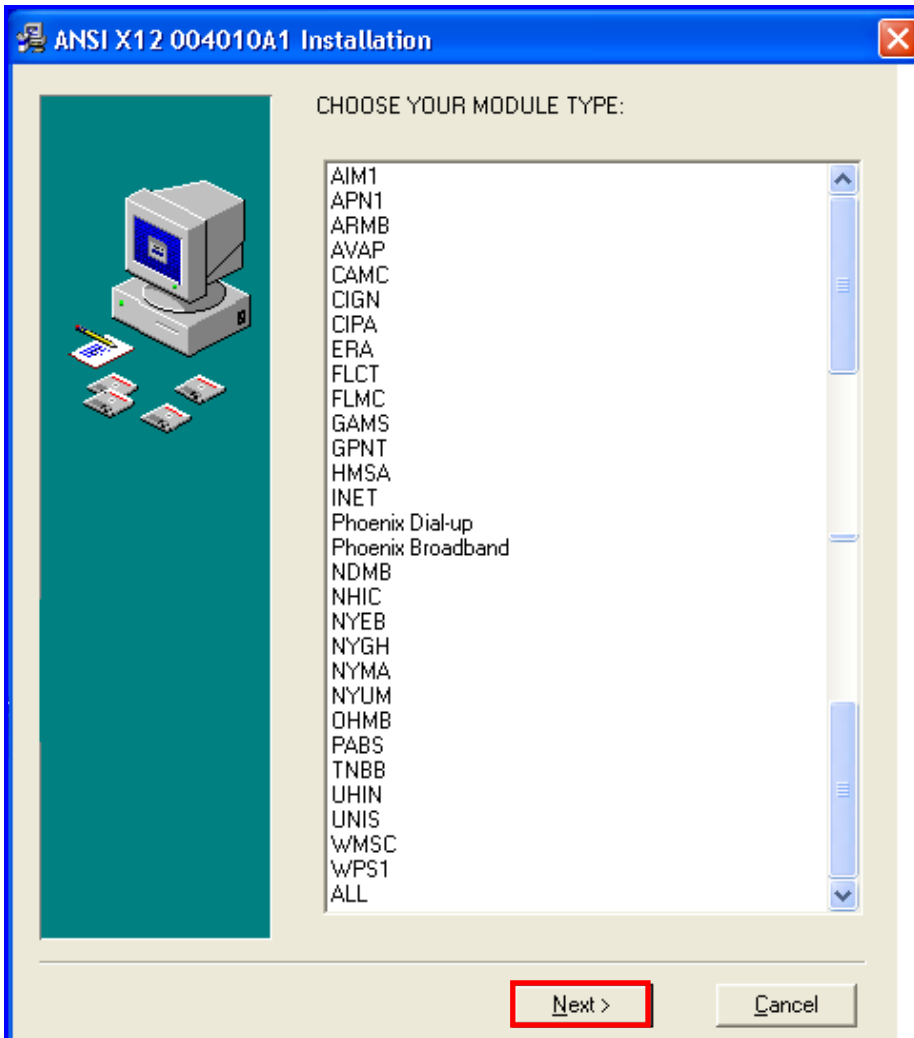
6. Click **Run** in the **Open File** screen.



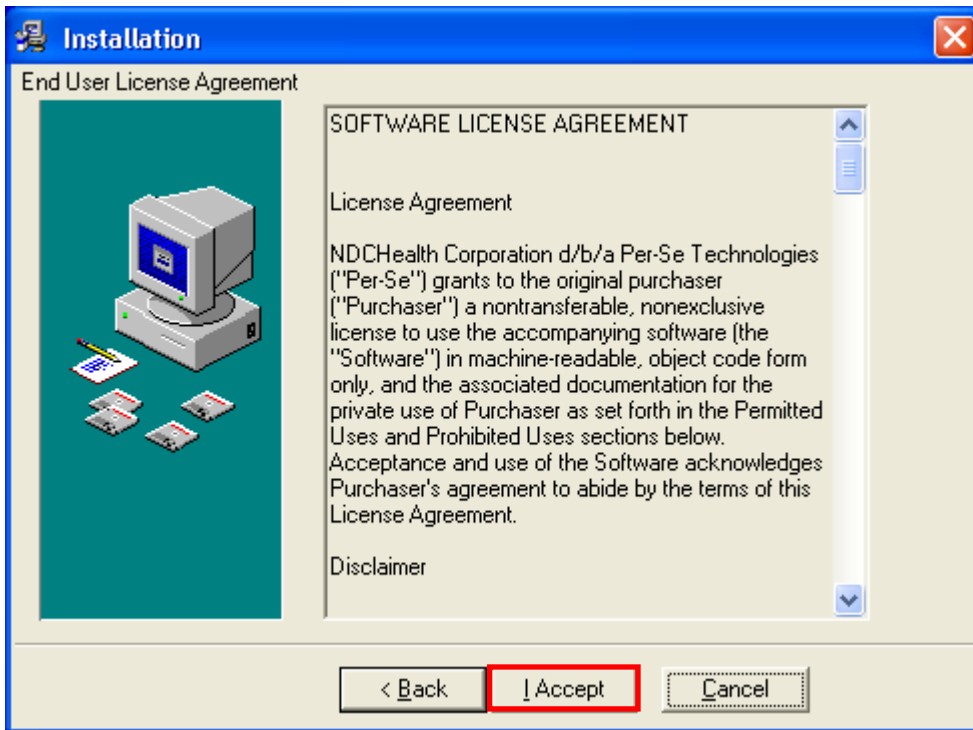
7. Click **Next** in the **Welcome** screen.



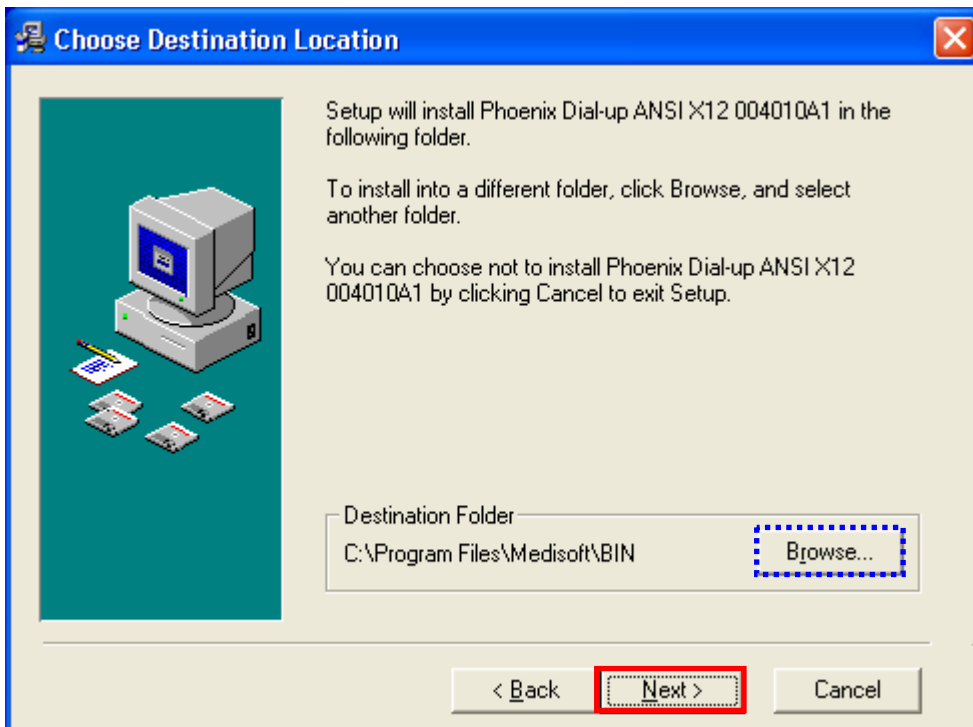
8. Select your module type – using the scroll bar if necessary, and click **Next**.



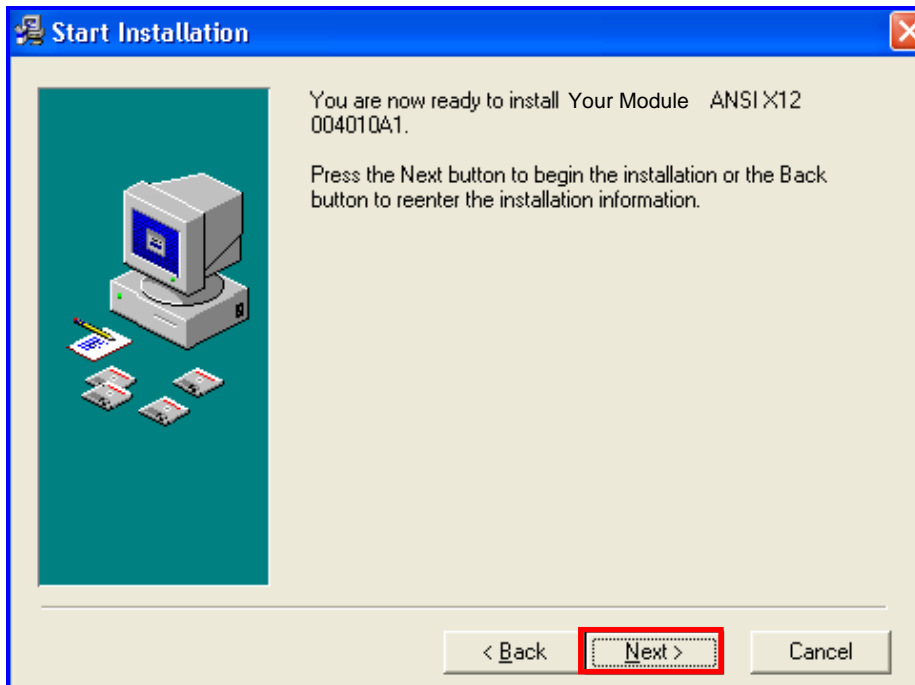
9. Click **I Accept** in the **EULA** window.



10. The default directory is **C:\Program Files\Medisoft\Bin**. If your version is installed in a location other than this, then click on the **Browse** button to locate the **Medisoft Program Directory** noted in **Step One** and continue with the installation. Click **Next**.



11. Click **Next** in the **Start Installation** window.



12. Click **Finish** to complete the installation.

