

Medisoft 12.06 EDI Install

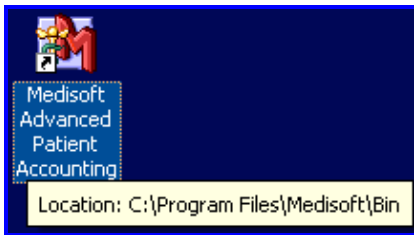
The download link within this article contains **All Medisoft 12 Modules** built for this release.

Follow the directions below to download and install:

www.medisoft.com/download/EDI/M_12_06Install.exe

1. Find the directory to which you installed your version of Medisoft by holding your pointer over the **Medisoft Desktop** icon. A pop-up will appear with the location of the Medisoft Program Directory.

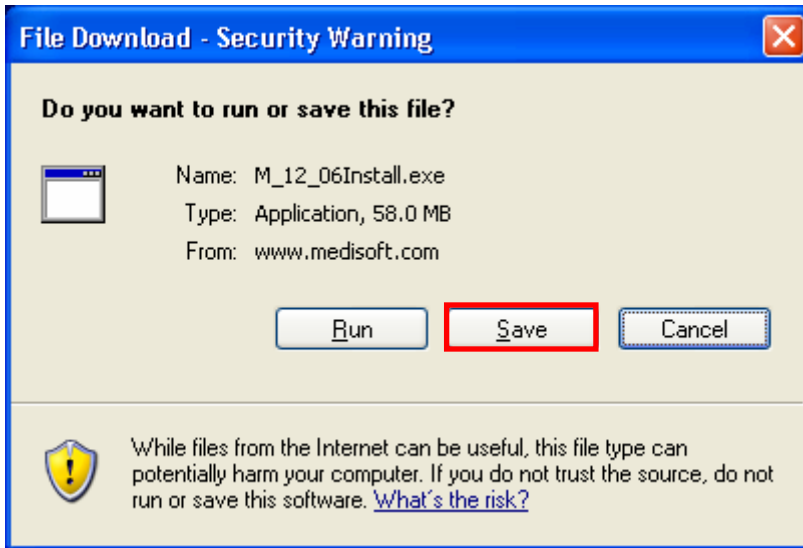
In this example it is **C:\Program Files\Medisoft\Bin**. **NOTE: If your location is other than this, write it down as it will be crucial in step ten.**



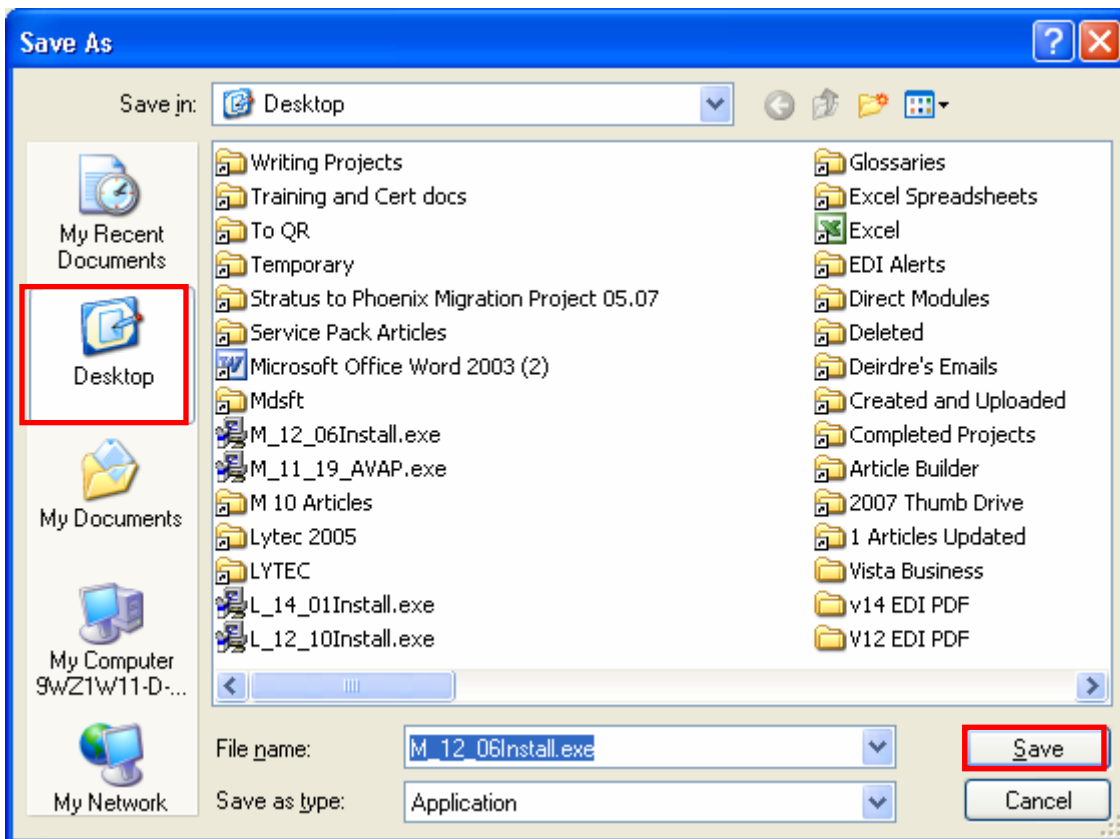
2. Click on the following link to download the **Medisoft 12.06 install**:

www.medisoft.com/download/EDI/M_12_06Install.exe

3. When the **Security Warning** opens, click **Save**.

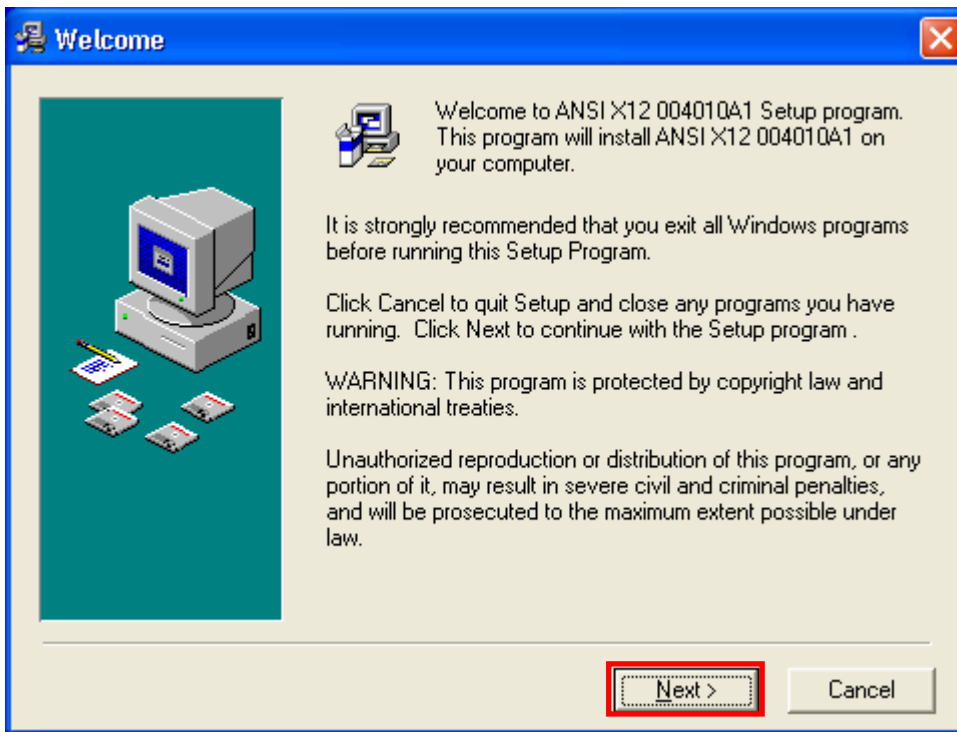


4. Select **Desktop** and click **Save**.

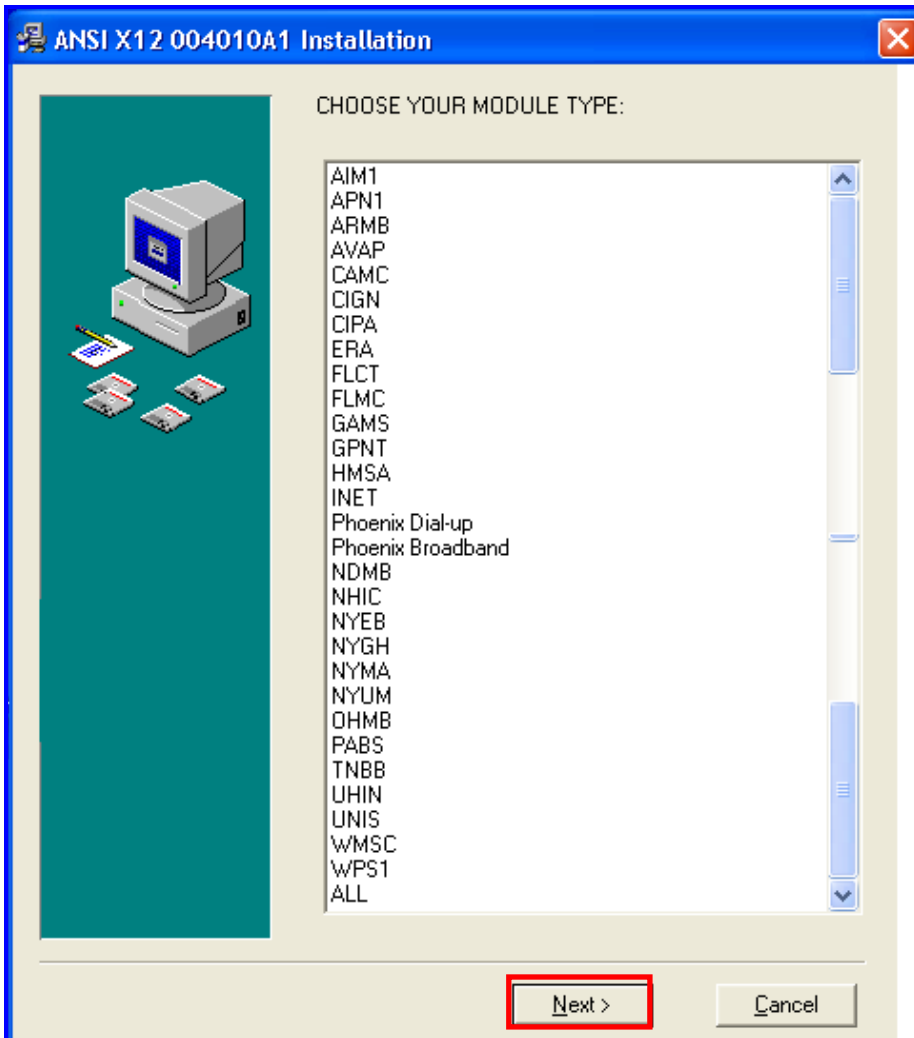


5. Once the download completes, double-click on the **M_12_06Install.exe** icon.

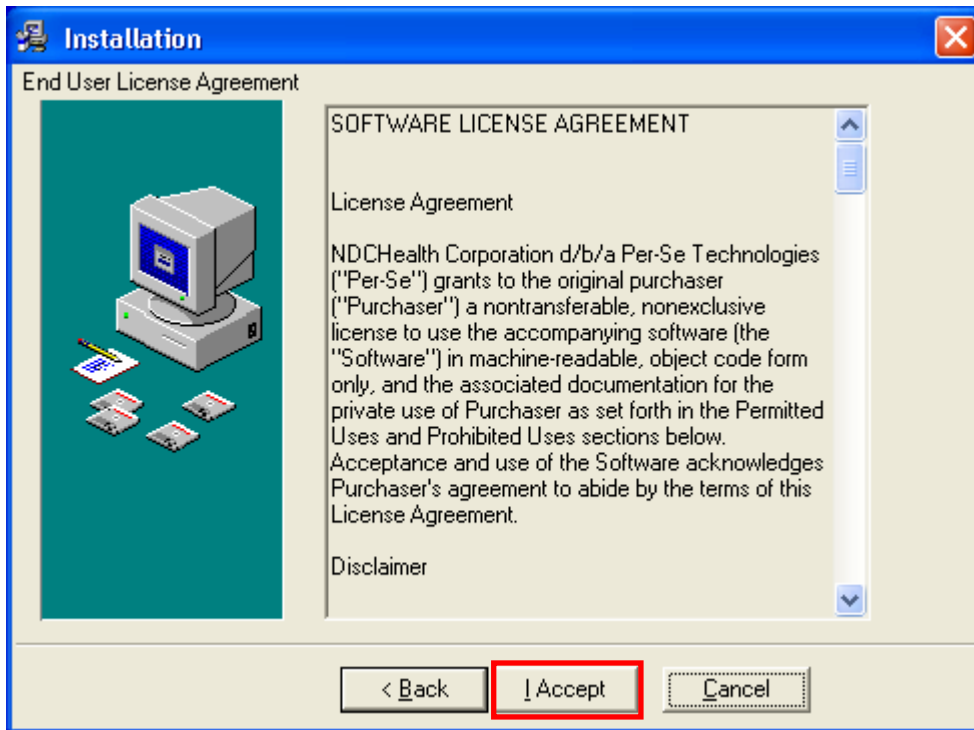
6. Click **Next** in the **Welcome** screen.



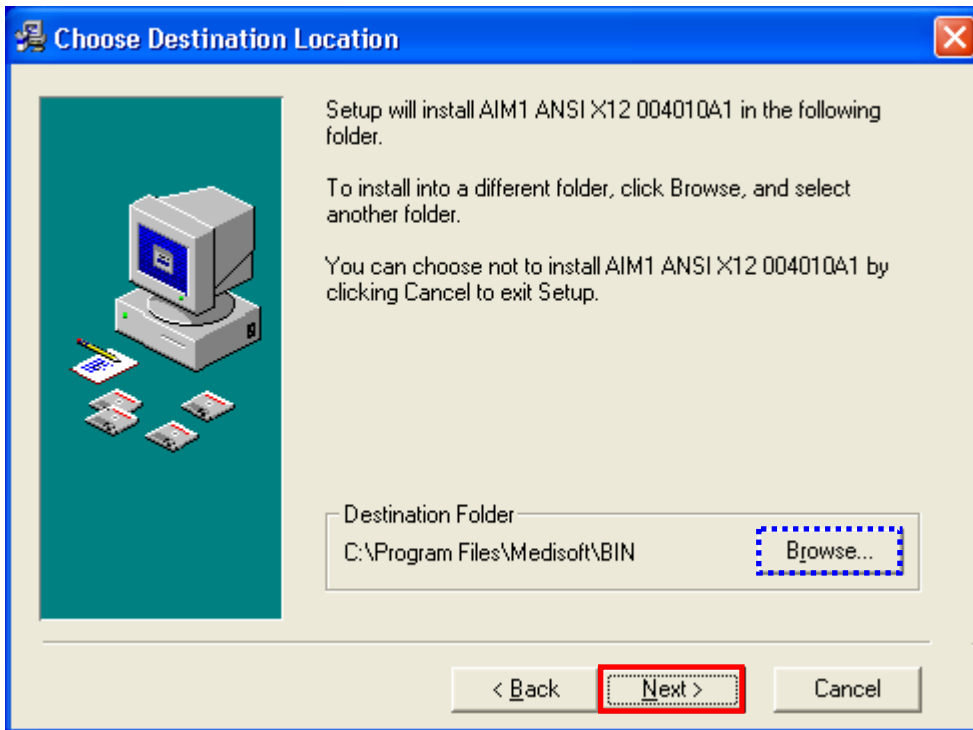
7. Select your **Module Type** and click **Next**. *If necessary, use the scroll bar to view all of the Modules.*



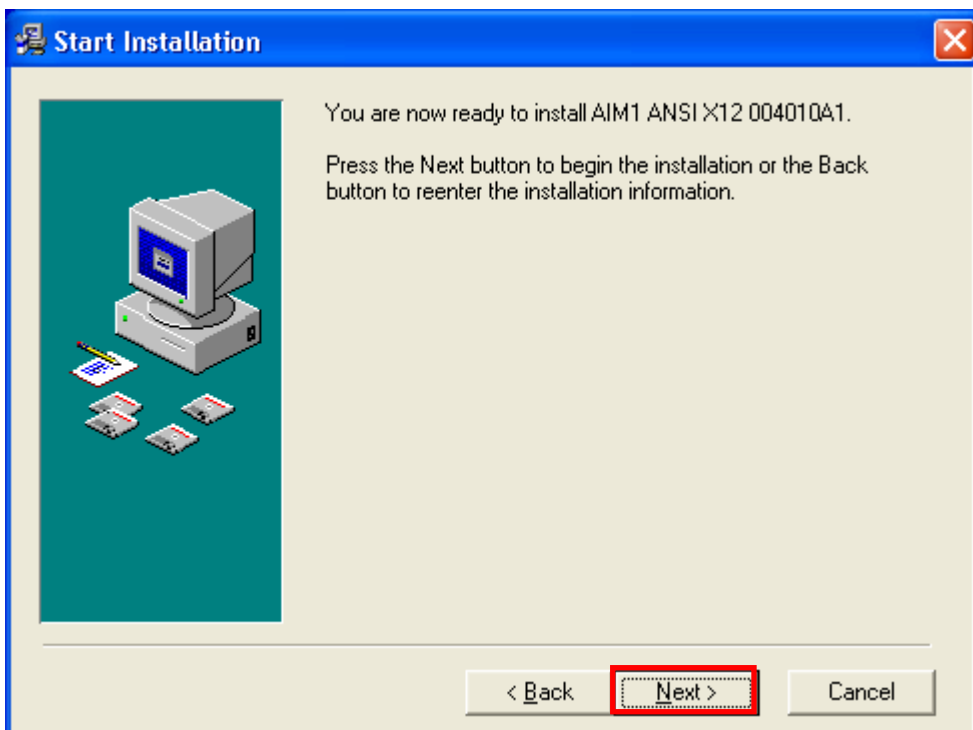
9. Click **I Accept** in the **EULA** window.



10. The default directory is **C:\Program Files\Medisoft\Bin**. If your version is installed in a location other than **C:\Program Files\Medisoft\Bin**, click on the **Browse** button to locate the Medisoft Program Directory noted in Step One and continue with the installation. Click **Next**.



11. Click **Next** in the **Start Installation** window.



12. Clicking **Finish** will complete the installation.

