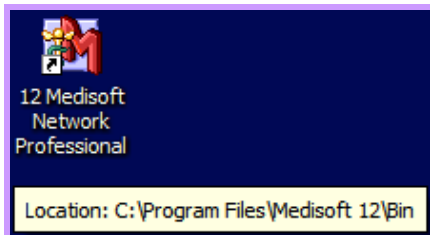


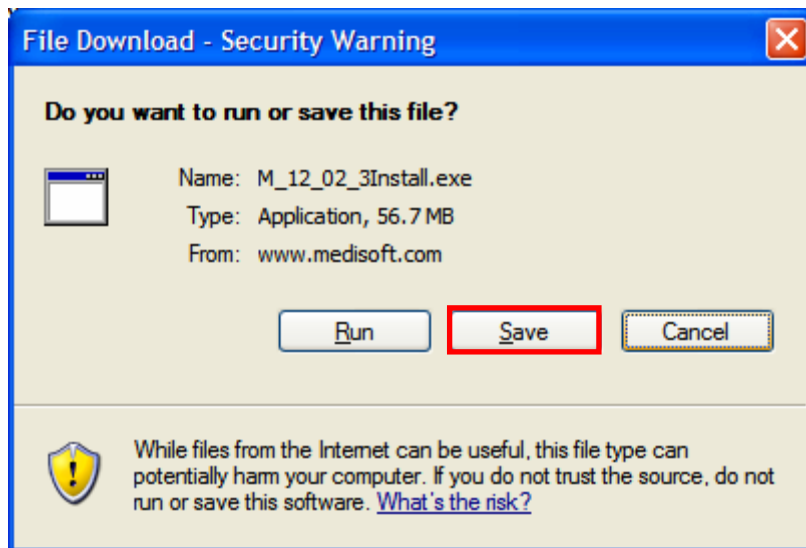
The download link within this article contains **All Medisoft 12 Modules** built for this release. Follow the directions below to download and install:

1. Find the directory to which you installed your version of Medisoft by holding your pointer over the **Medisoft Desktop** icon. A pop-up will appear with the location of the Medisoft Program Directory. In this example it is **C:\Program Files\Medisoft\Bin**. **NOTE: If your location is other than this, write it down as it will be crucial in step nine.**

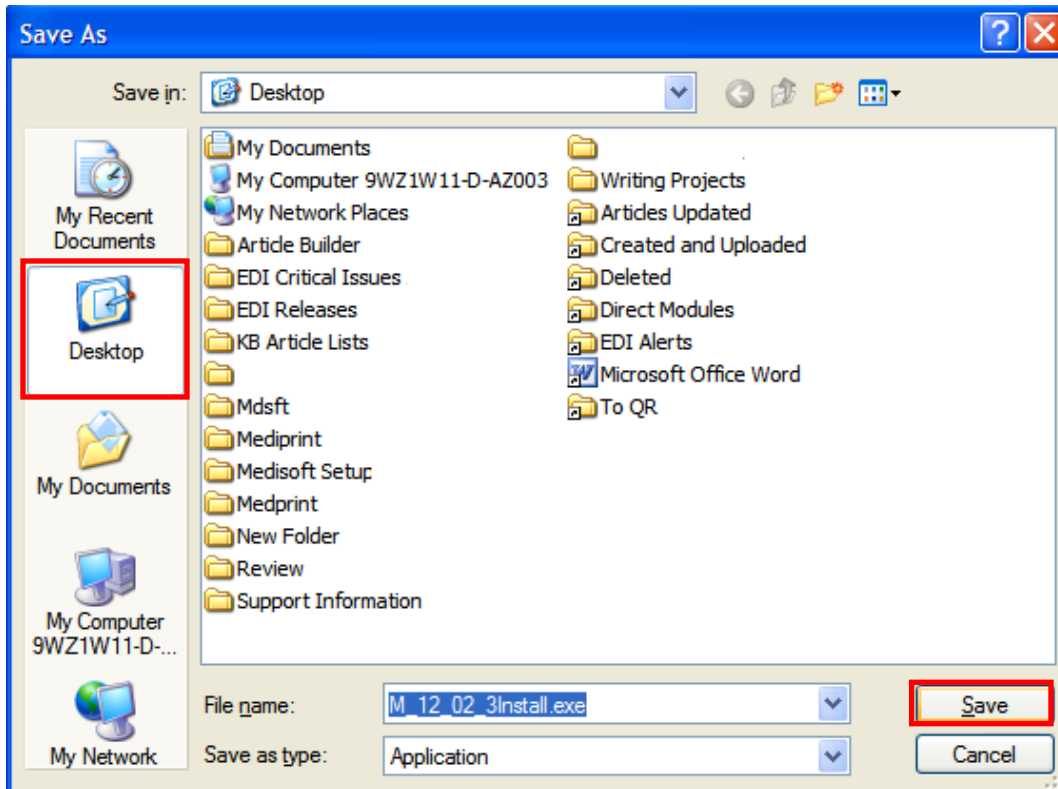


2. Click on the following link to download the **Medisoft 12.04 install**: www.medisoft.com/download/EDI/M_12_04Install.exe

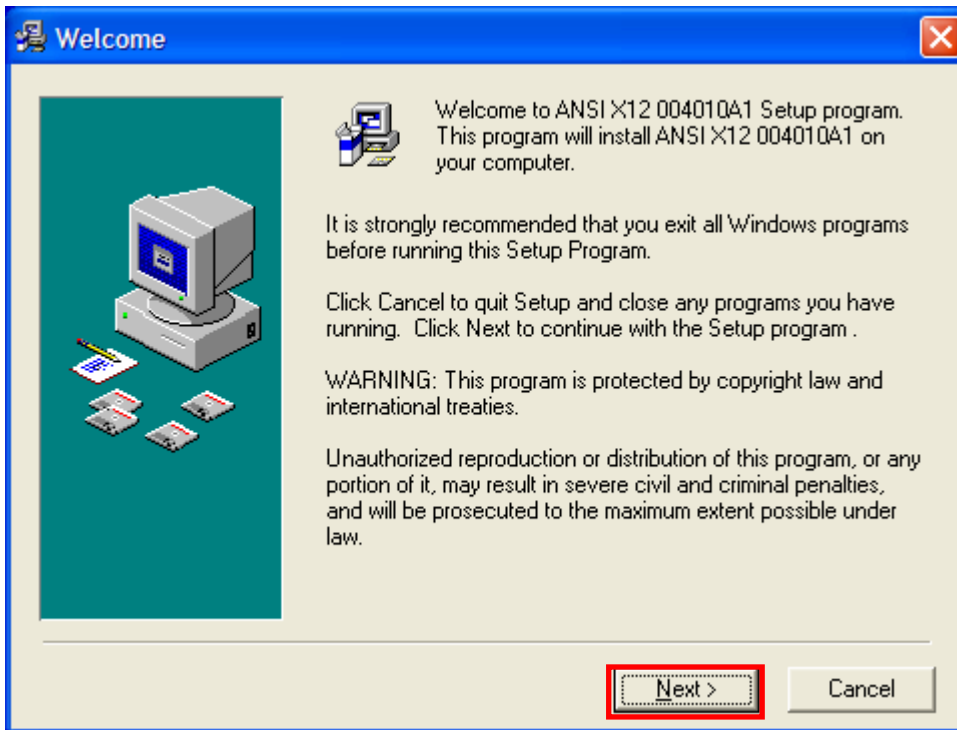
3. When the **Security Warning** opens, click **Save**.



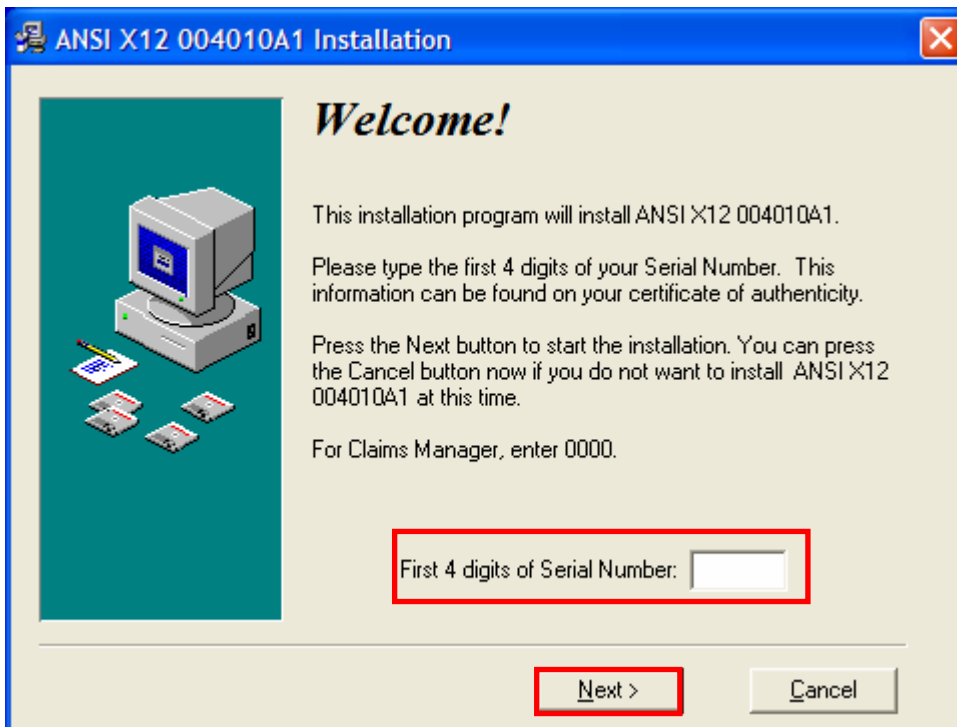
4. Select **Desktop** and click **Save**.



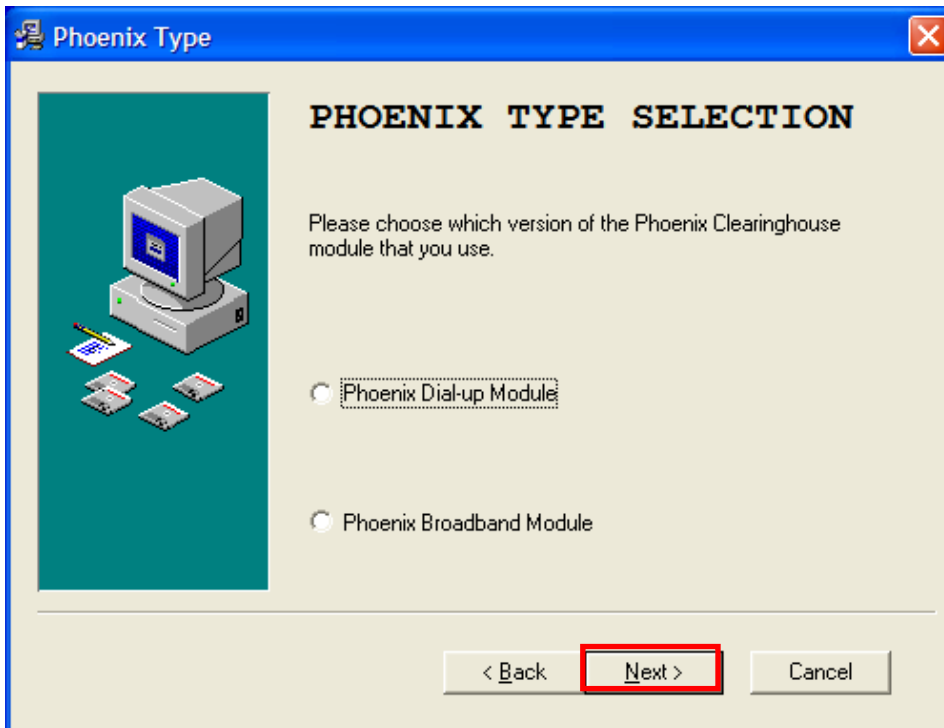
5. Once the download completes, double-click on the **12.04Install.exe** icon.
6. Click **Next** in the **Welcome** screen.



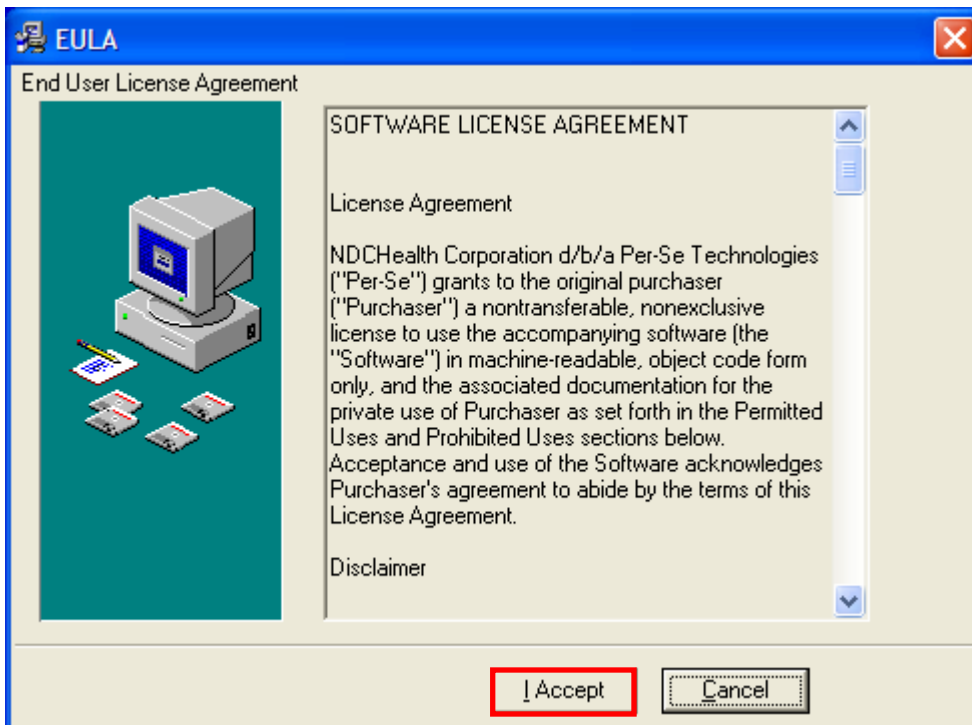
7. Enter the **first four digits** of your **Serial Number** found on your ***Certificate of Authenticity*** and click **Next**. Entering the correct serial number will install the right module for you. For **Claims Manager** enter **0000**.



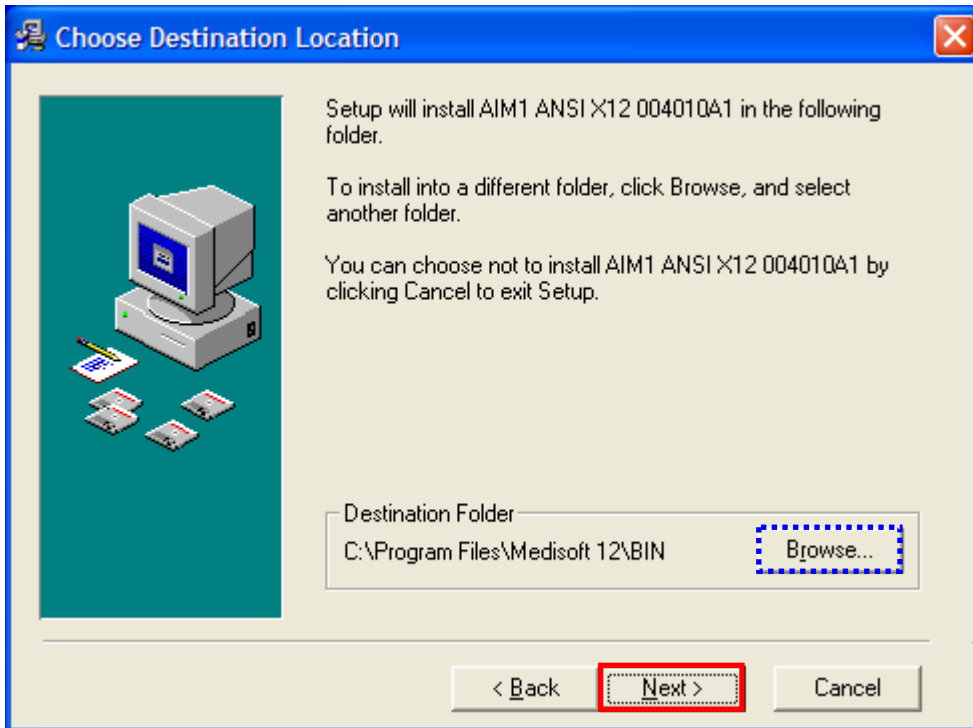
For **Phoenix Module** customers, select either **Phoenix Dial-up Module** or **Phoenix Broadband Module**. Click **Next**.



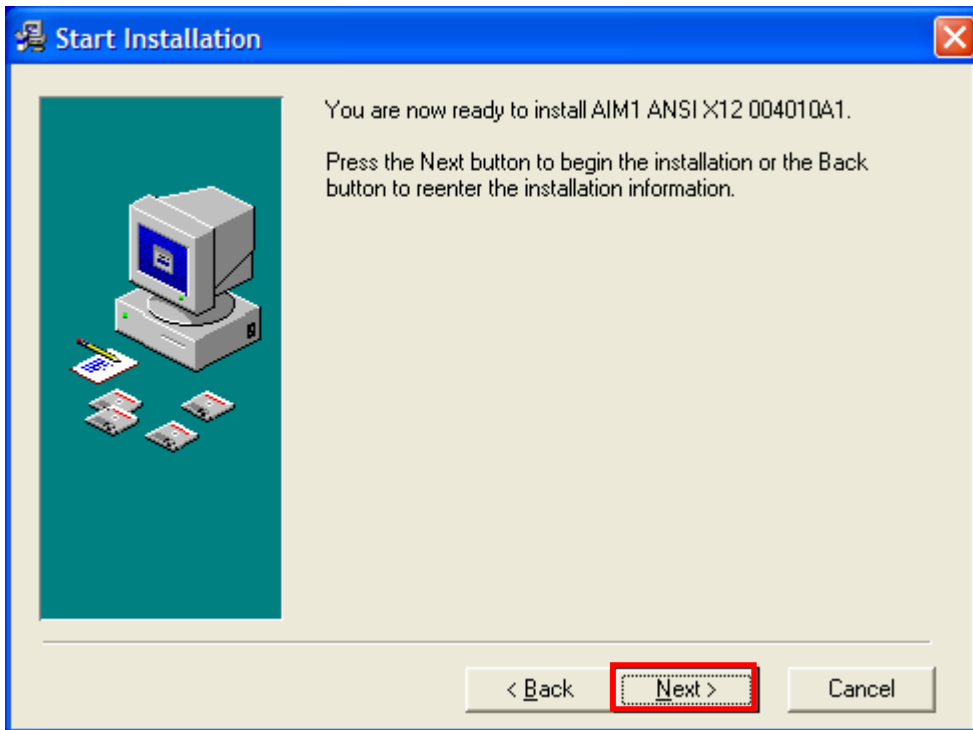
8. Click **I Accept** in the EULA window.



9. The default directory is **C:\Program Files\Medisoft\Bin**. If your version is installed in a location other than **C:\Program Files\Medisoft\Bin**, then click on the **Browse** button to locate the **Medisoft Program Directory** noted in **Step One** and continue with the installation. Click **Next**.



10. Click **Next** in the **Start Installation** window.



11. Clicking **Finish** will complete the installation.

